

# 3-Valve manifold IV315

Center distance 54 mm

For differential pressure instruments

E 09.20.02

Ed.22.01

The 3-valve manifold consists of two shut-off valves and one pressure compensating valve. The shut-off valves separate the process from the differential pressure measuring instrument. The pressure compensating valve enables the compensation between + side and - side to avoid one-sided overpressure during commissioning and operation.

## Type IV315

Valve position radial, valves side-by-side

Center distance gauge side 54 mm

For 732.14 differential pressure gauge

For DPGS43HP differential pressure gauge with switch contacts

For DPGT43HP differential pressure gauge with output signal

Material body stainless steel 316L

Material packing PTFE

Nominal pressure 6000 psi / 420 bar

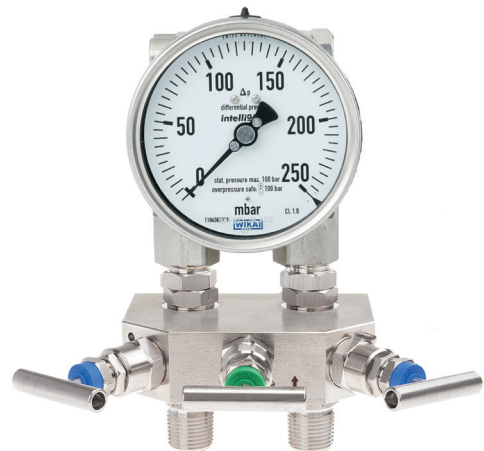
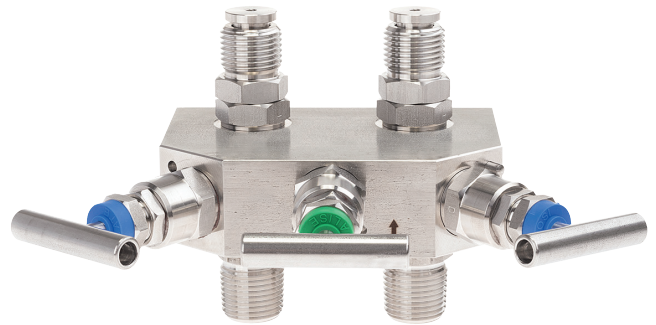
With bracket holes for mounting with bracket

NACE Sour Gas Service

Inspection certificate 3.1 EN 10204

all wetted parts material

For more information: [WIKA Datasheet AC 09.23](#)



## 3-Valve manifold type IV315

Item	Instrument side	Process side	Valve position	Center distance	Packing
81640945	G1/2 male swivel	G1/2 male	Radial, valves side-by-side	54 mm	PTFE
36709683	G1/2 male swivel	1/2 NPT male	Radial, valves side-by-side	54 mm	PTFE